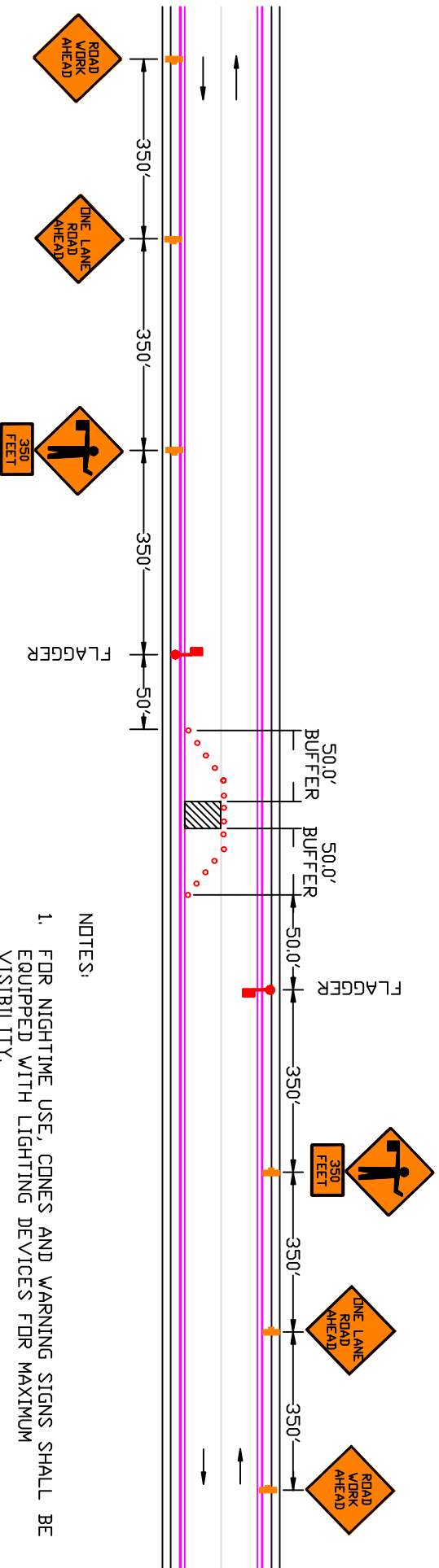


LANE CLOSURE ON TWO LANE ROAD WITH LOW TRAFFIC VOLUMES



NOTES:

1. FOR NIGHTTIME USE, CONES AND WARNING SIGNS SHALL BE EQUIPPED WITH LIGHTING DEVICES FOR MAXIMUM VISIBILITY.
2. NDT TO SCALE.