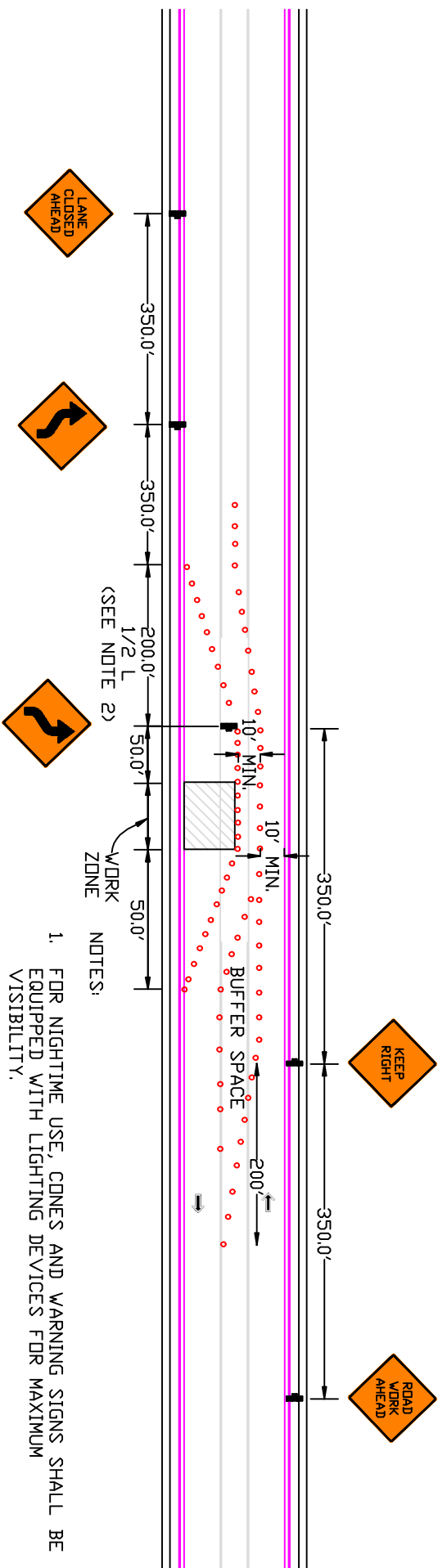


# LANE SHIFT



(SEE NOTE 2)

WORK ZONE

NOTES:

1. FOR NIGHTTIME USE, CONES AND WARNING SIGNS SHALL BE EQUIPPED WITH LIGHTING DEVICES FOR MAXIMUM VISIBILITY.
2. THIS EXAMPLE IS FOR A 40 mph SPEED LIMIT (S) AND AN OFFSET (W) OF 15.0'.  $L = WSS/60$ . IN THIS EXAMPLE,  $L = (15 \times 40 \times 40) / 60 = 400.0'$ ,  $1/2 L = 400 / 2 = 200'$ .

APPROVED BY:

DATE: