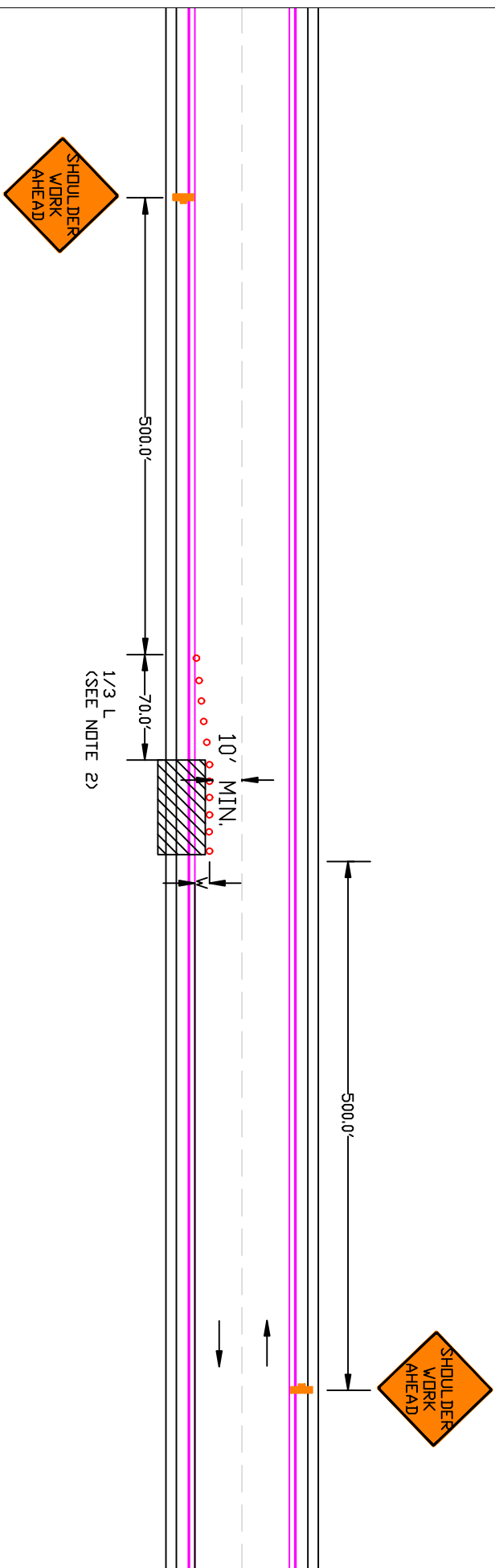


SHOULDER WORK WITH MINDR ENCROACHMENT



NOTES:

1. FOR NIGHTTIME USE, CONES AND WARNING SIGNS SHALL BE EQUIPPED WITH LIGHTING DEVICES FOR MAXIMUM VISIBILITY.
2. THIS EXAMPLE IS FOR A 40 MPH SPEED LIMIT (S) AND AN OFFSET (W) OF 8.0'. $L = WS/S$. IN THIS EXAMPLE, $L = (8 \times 40 \times 40) / 60 = 213.3'$. $1/3 L = 213.3 / 3 = 71$ OR ROUND TO 70.0'.